

CLASSIC RIVERSIDE

Product Data Sheet

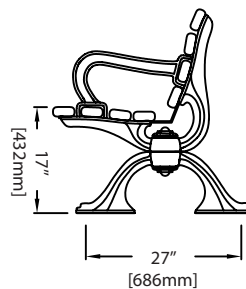
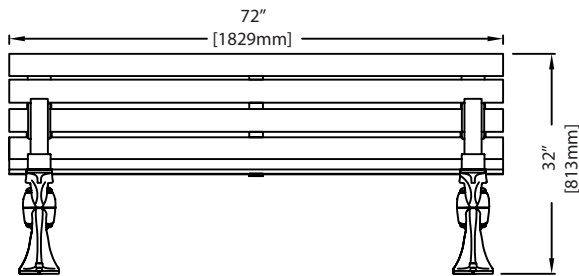


MATERIALS

- 100% Recycled Plastic Slats
- Cast Aluminum Ends
- Electrostatically Zinc Plated Steel Components
- Stainless Steel Hardware

FINISHES

- Cast Aluminum Ends And Zinc Treated Steel Components
- Slats Available In Grey, Walnut, Sand, Green, Redwood, Olive And Charcoal
- Glossy Black Powdercoat Finish Resistant To Impact, Moisture, Chipping, Corrosion, And Fading
- Premium Slat Colours Available



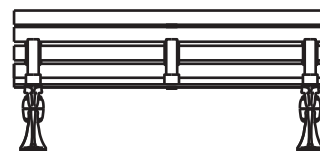
TO SPECIFY

- Slat Colour
- Frame / Ends Colour
- Arm Configuration

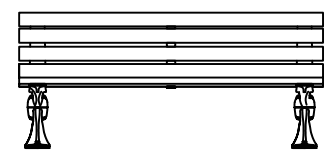
Length	72"	1829mm
Depth	27"	686mm
Height	32"	813mm
Seat Height	17"	432mm
Weight Range	170 lbs - 185 lbs	77 kgs – 84 kgs

Optional Arm Configurations

Centre Arm



No Arms



Classic Displays
Right for you since 1977